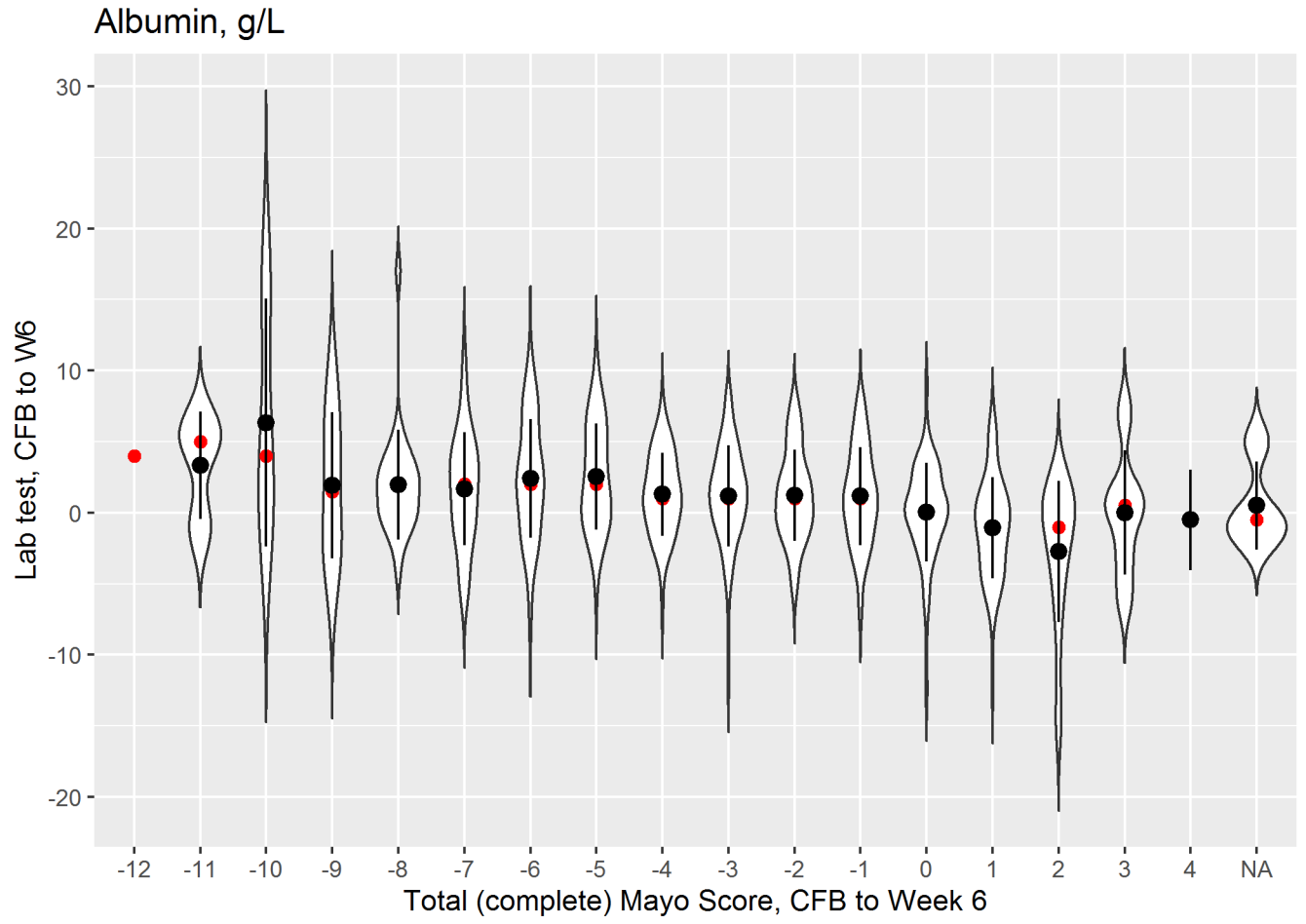
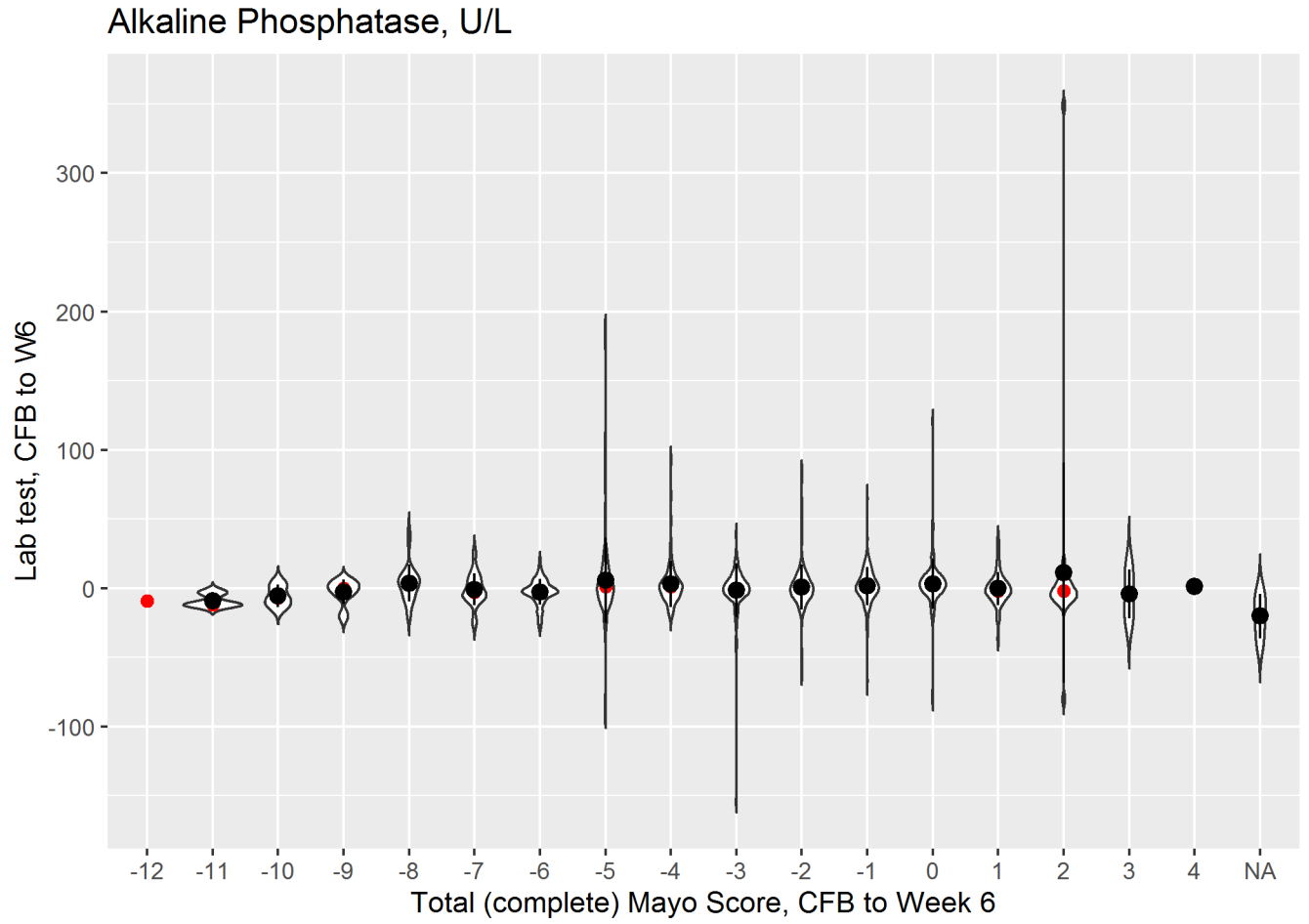


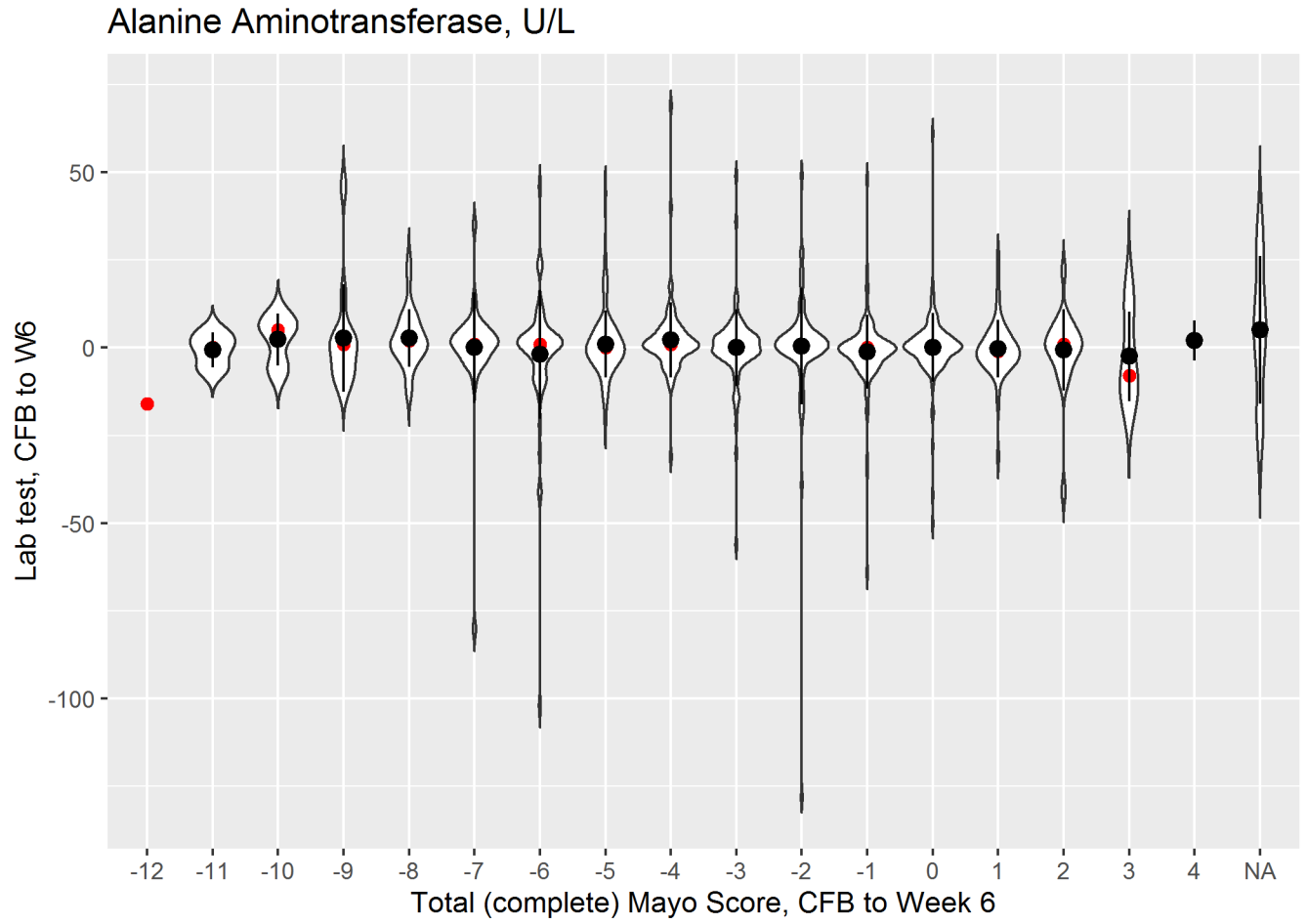
Violin Plot for Albumin, g/L
: change from baseline lab vs outcome



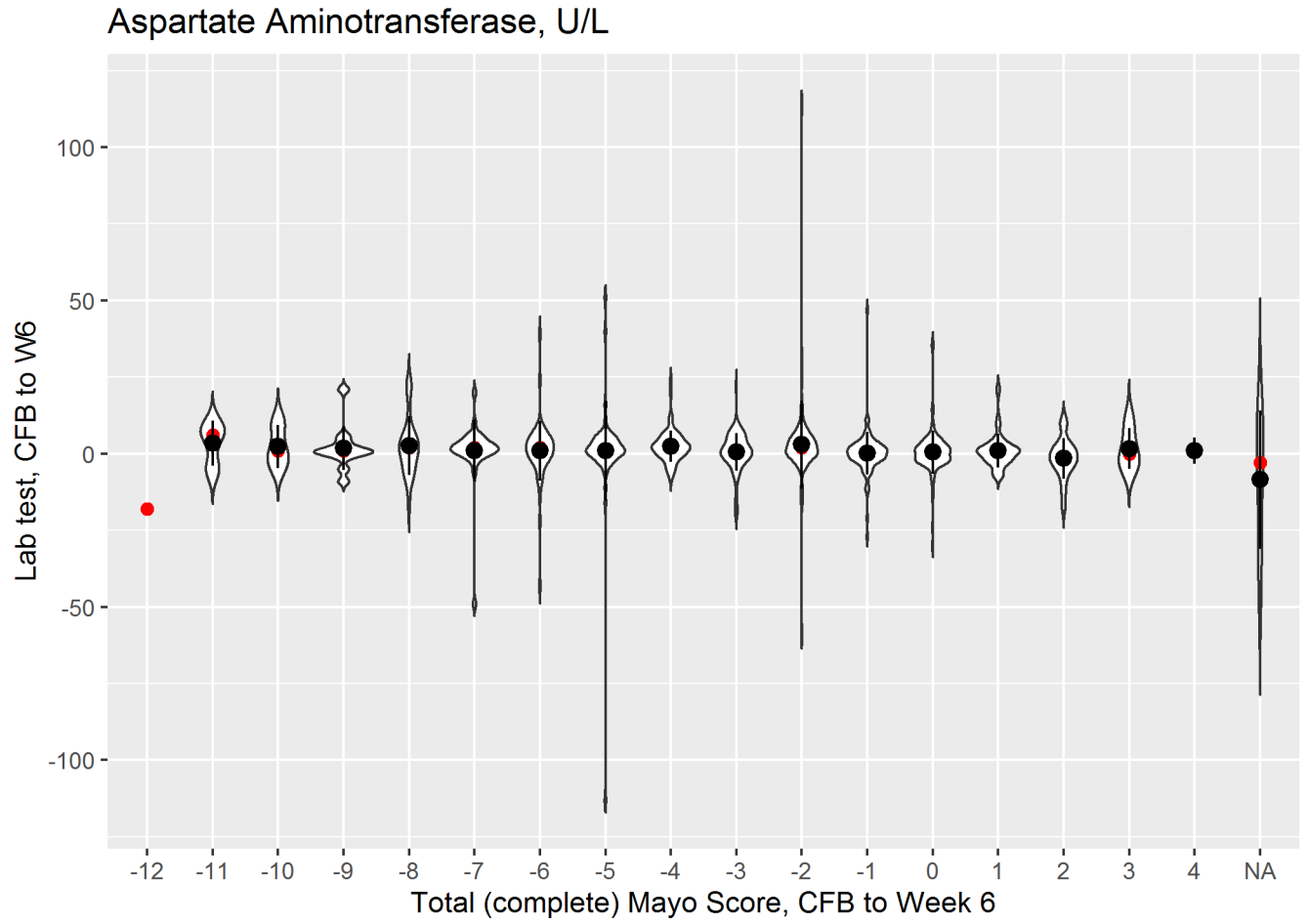
Violin Plot for Alkaline Phosphatase, U/L
: change from baseline lab vs outcome



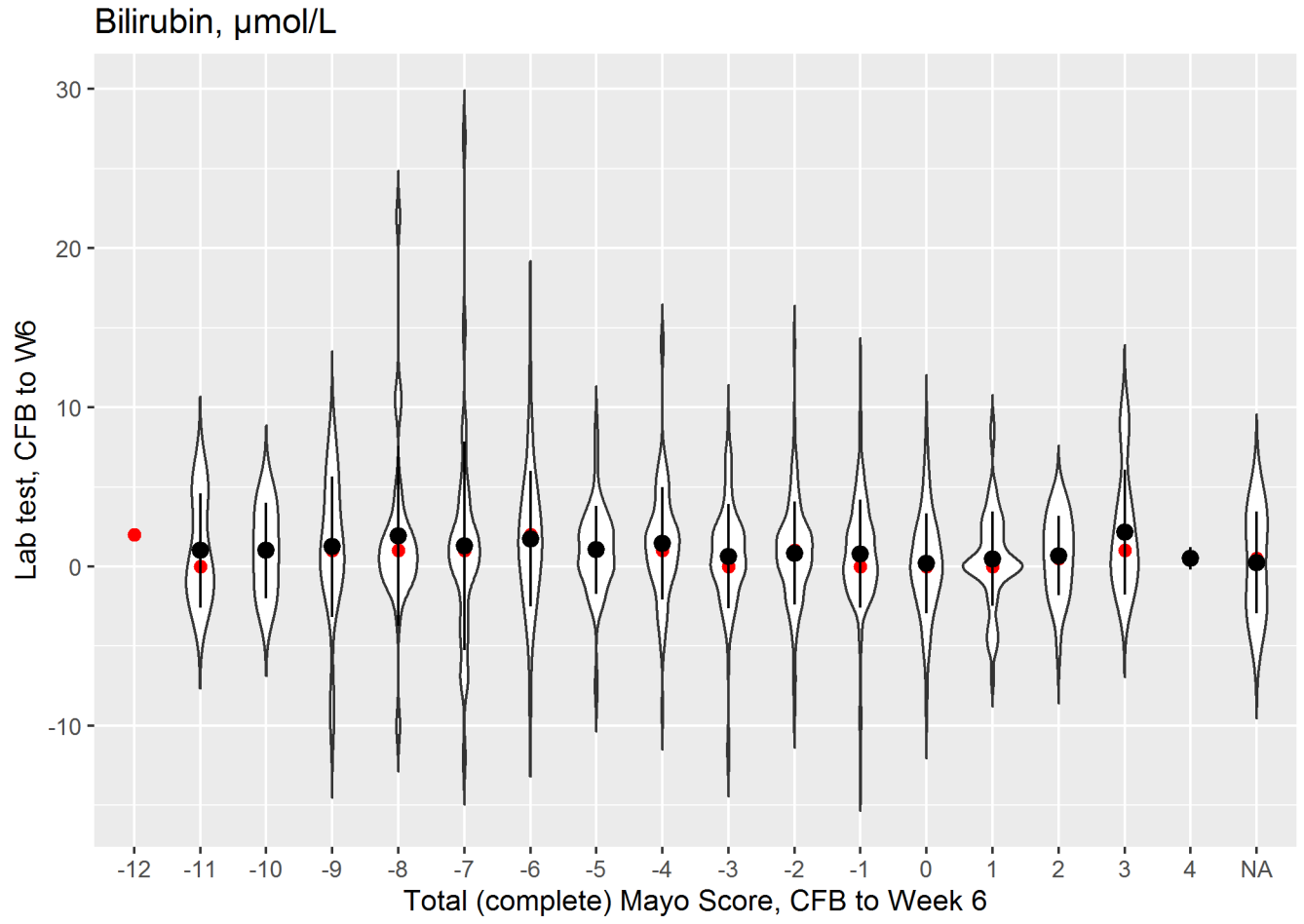
Violin Plot for Alanine Aminotransferase, U/L
: change from baseline lab vs outcome



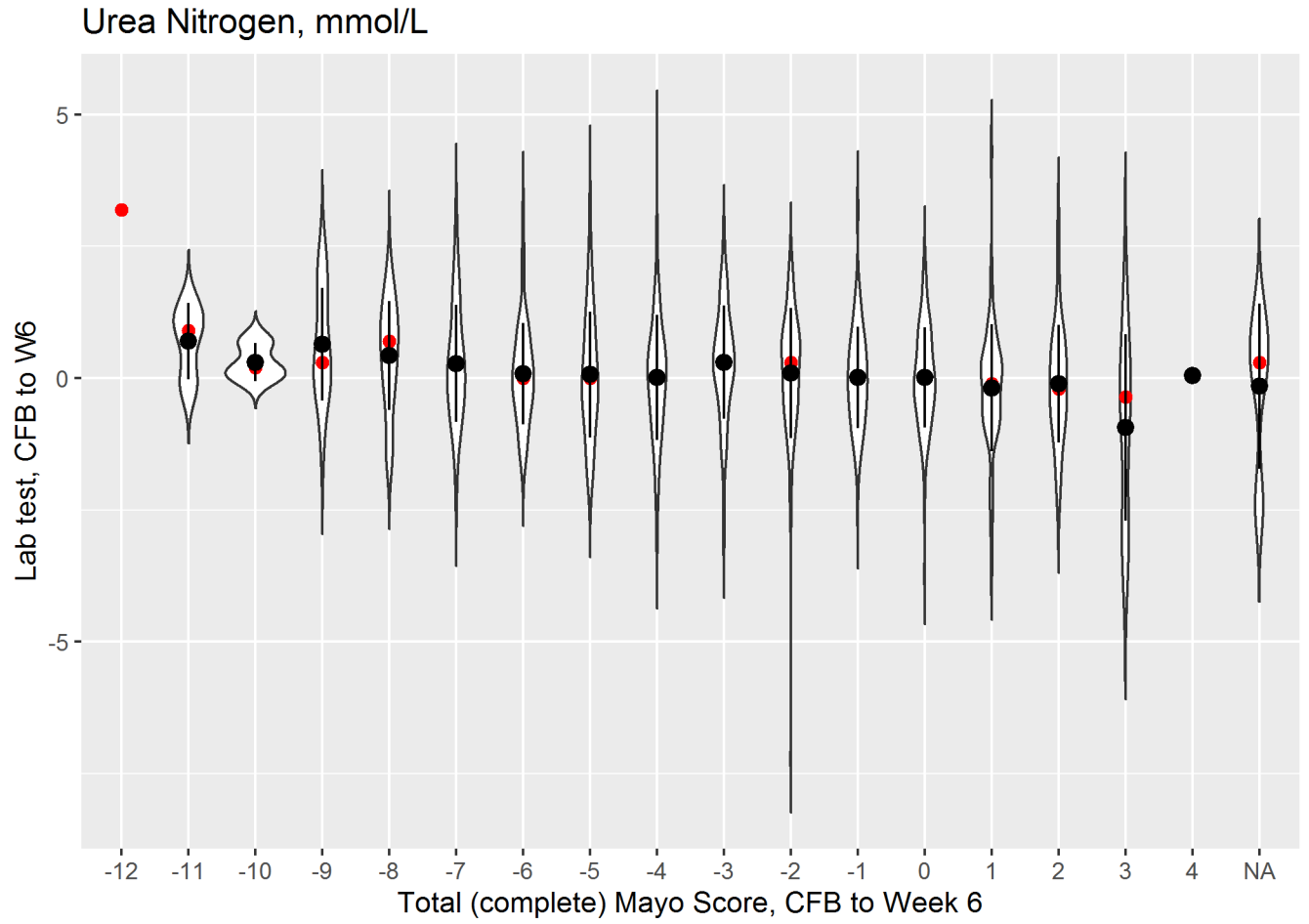
Violin Plot for Aspartate Aminotransferase, U/L
: change from baseline lab vs outcome



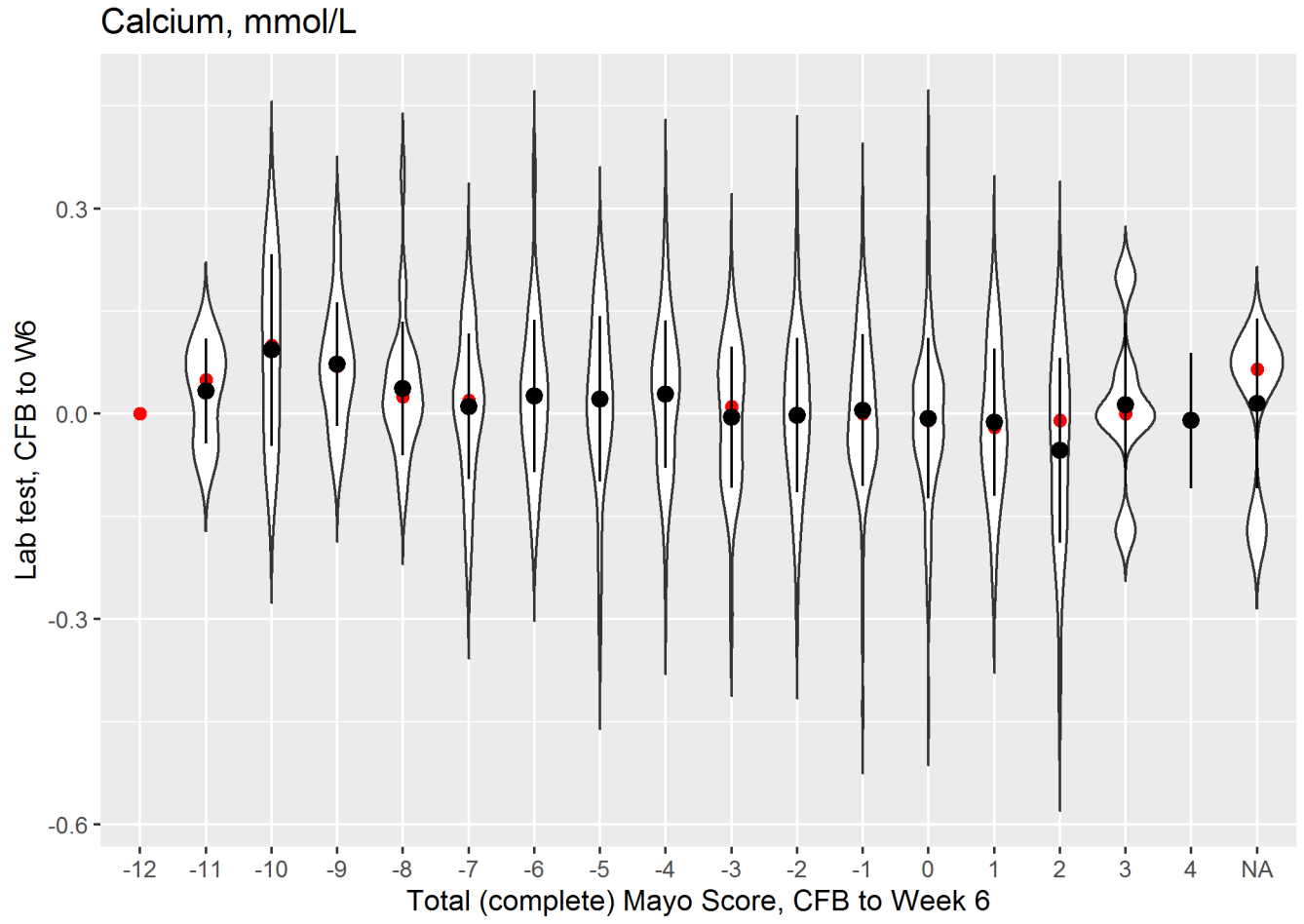
Violin Plot for Bilirubin, $\mu\text{mol/L}$
: change from baseline lab vs outcome



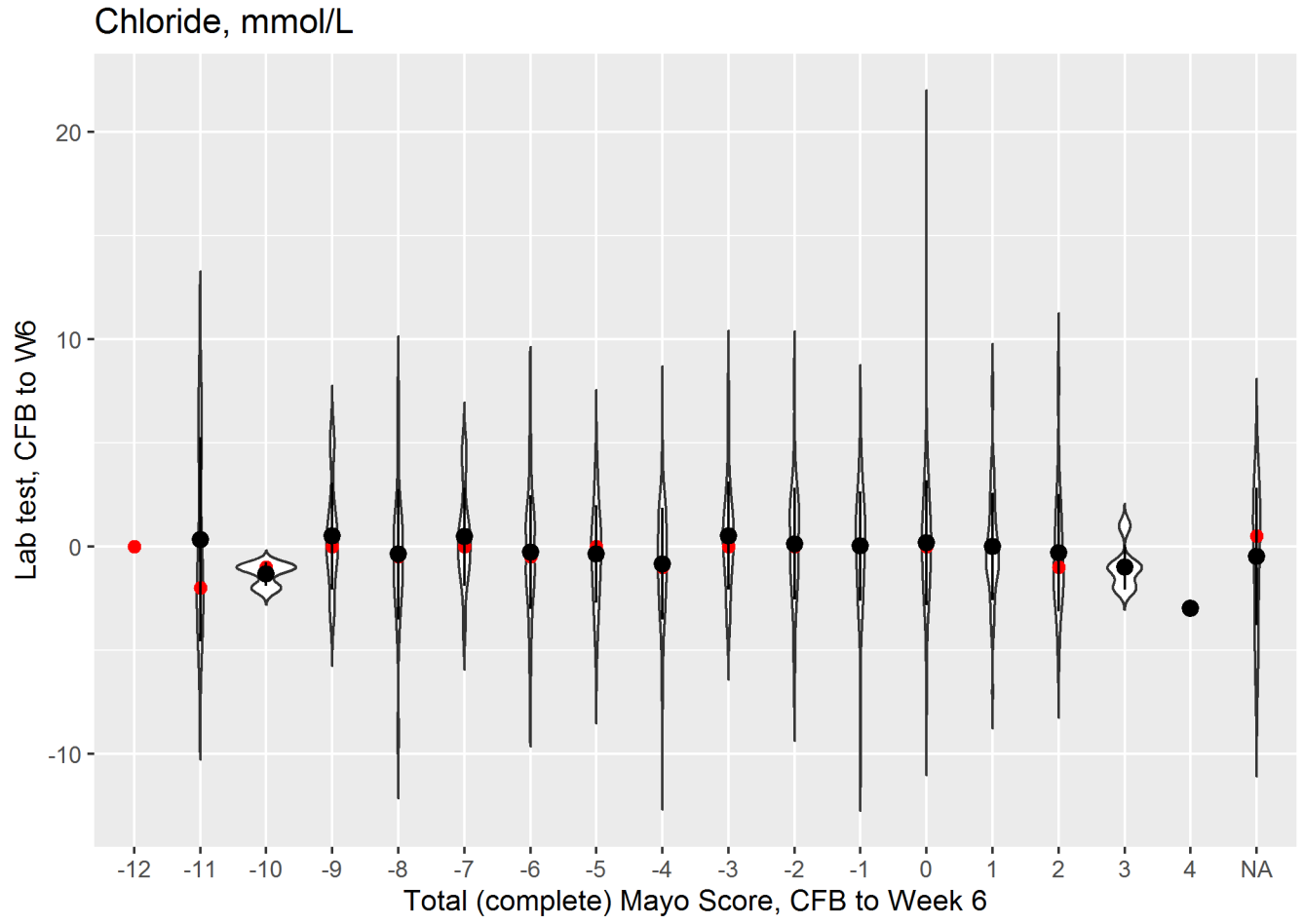
Violin Plot for Urea Nitrogen, mmol/L
: change from baseline lab vs outcome



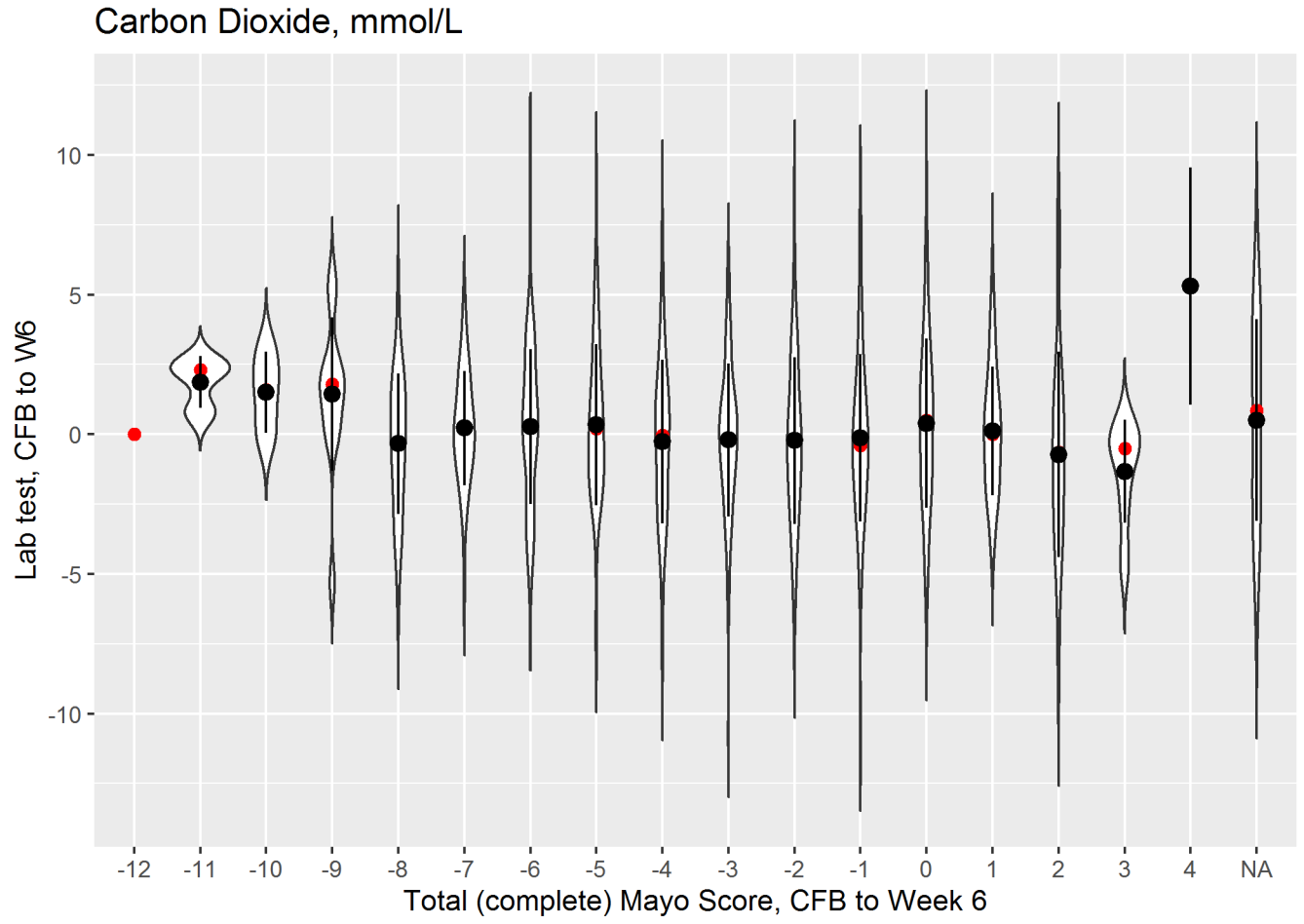
Violin Plot for Calcium, mmol/L
: change from baseline lab vs outcome



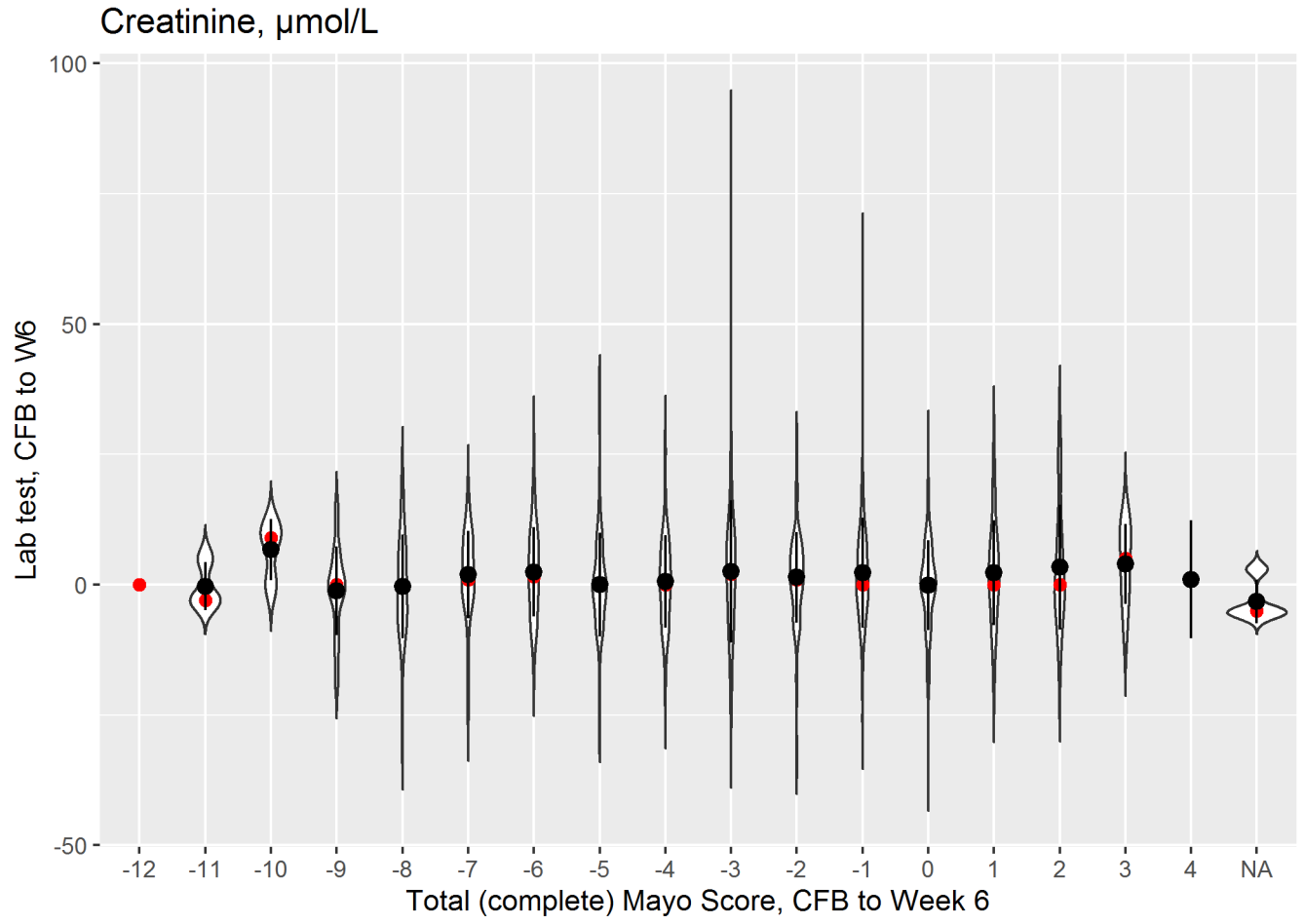
Violin Plot for Chloride, mmol/L
: change from baseline lab vs outcome



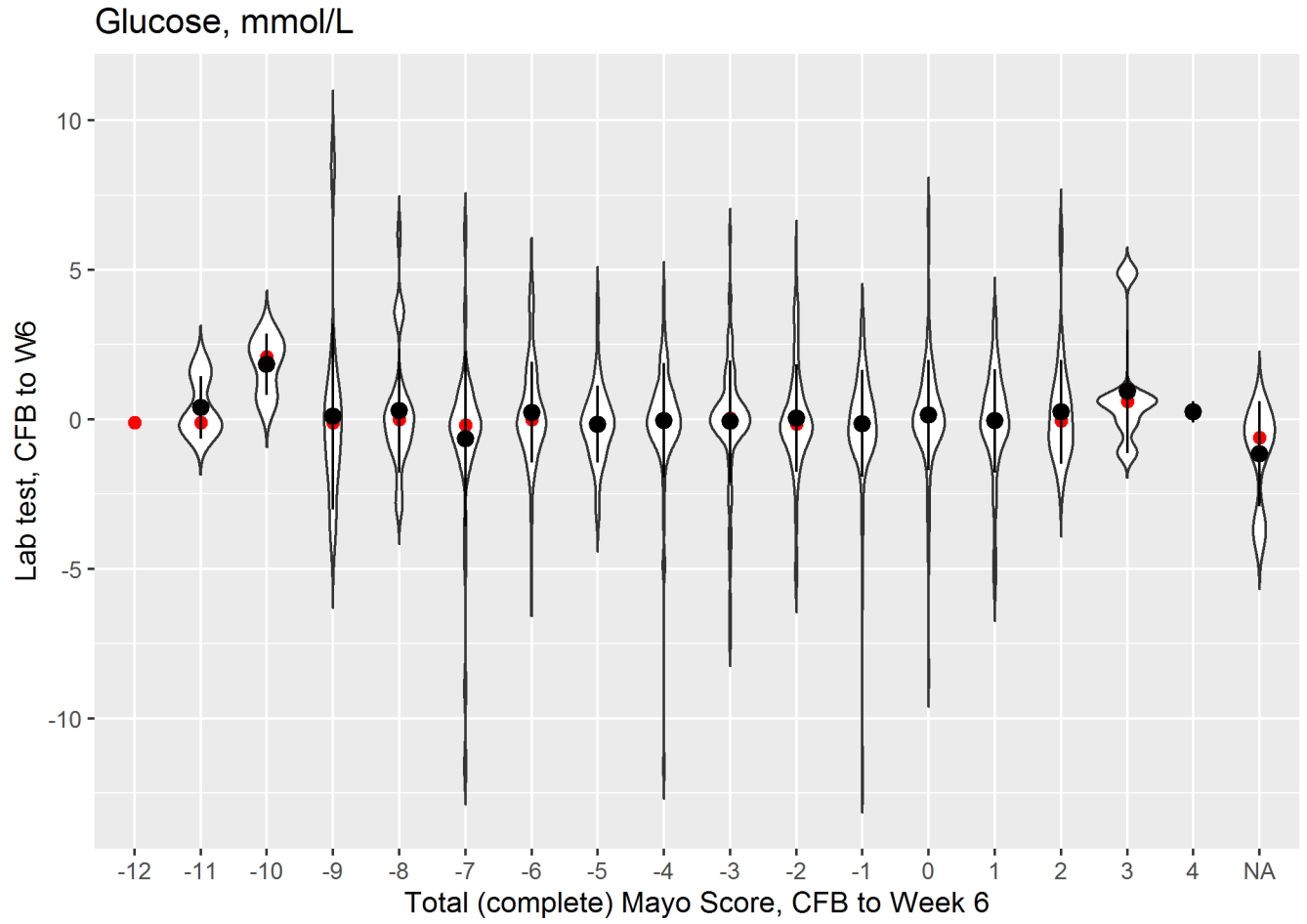
Violin Plot for Carbon Dioxide, mmol/L
: change from baseline lab vs outcome



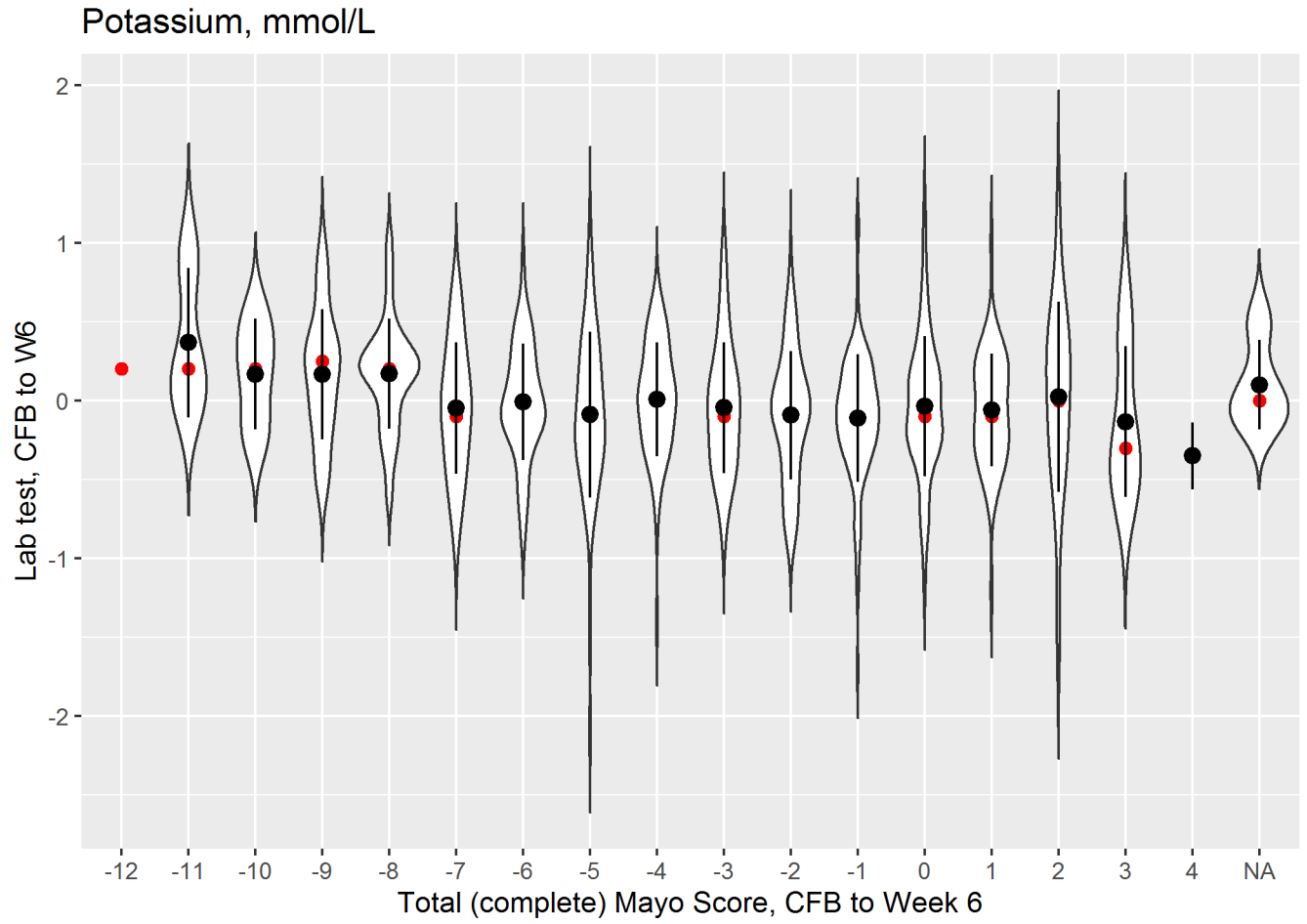
Violin Plot for Creatinine, $\mu\text{mol/L}$
: change from baseline lab vs outcome



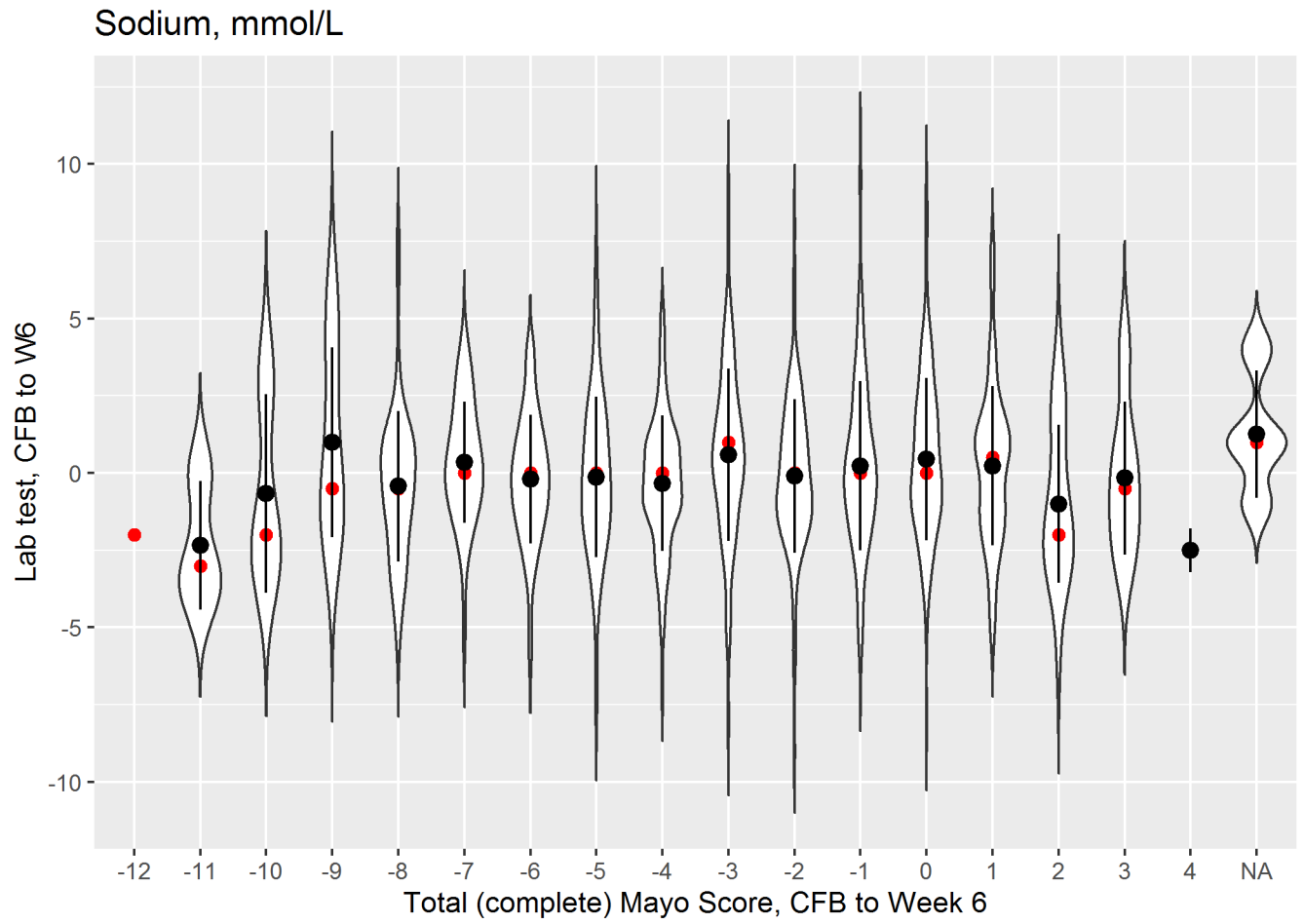
Violin Plot for Glucose, mmol/L
: change from baseline lab vs outcome



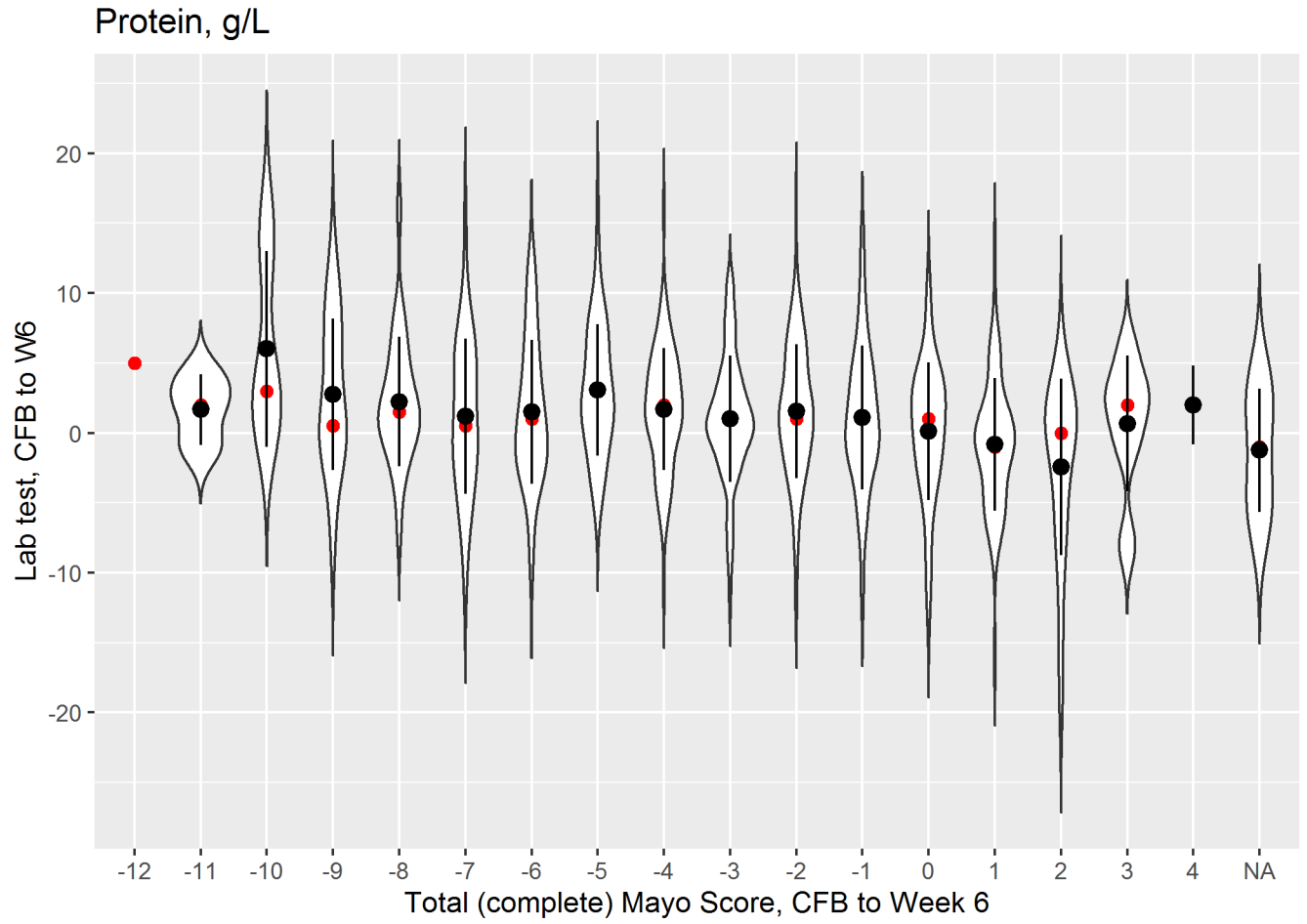
Violin Plot for Potassium, mmol/L
: change from baseline lab vs outcome



Violin Plot for Sodium, mmol/L
: change from baseline lab vs outcome

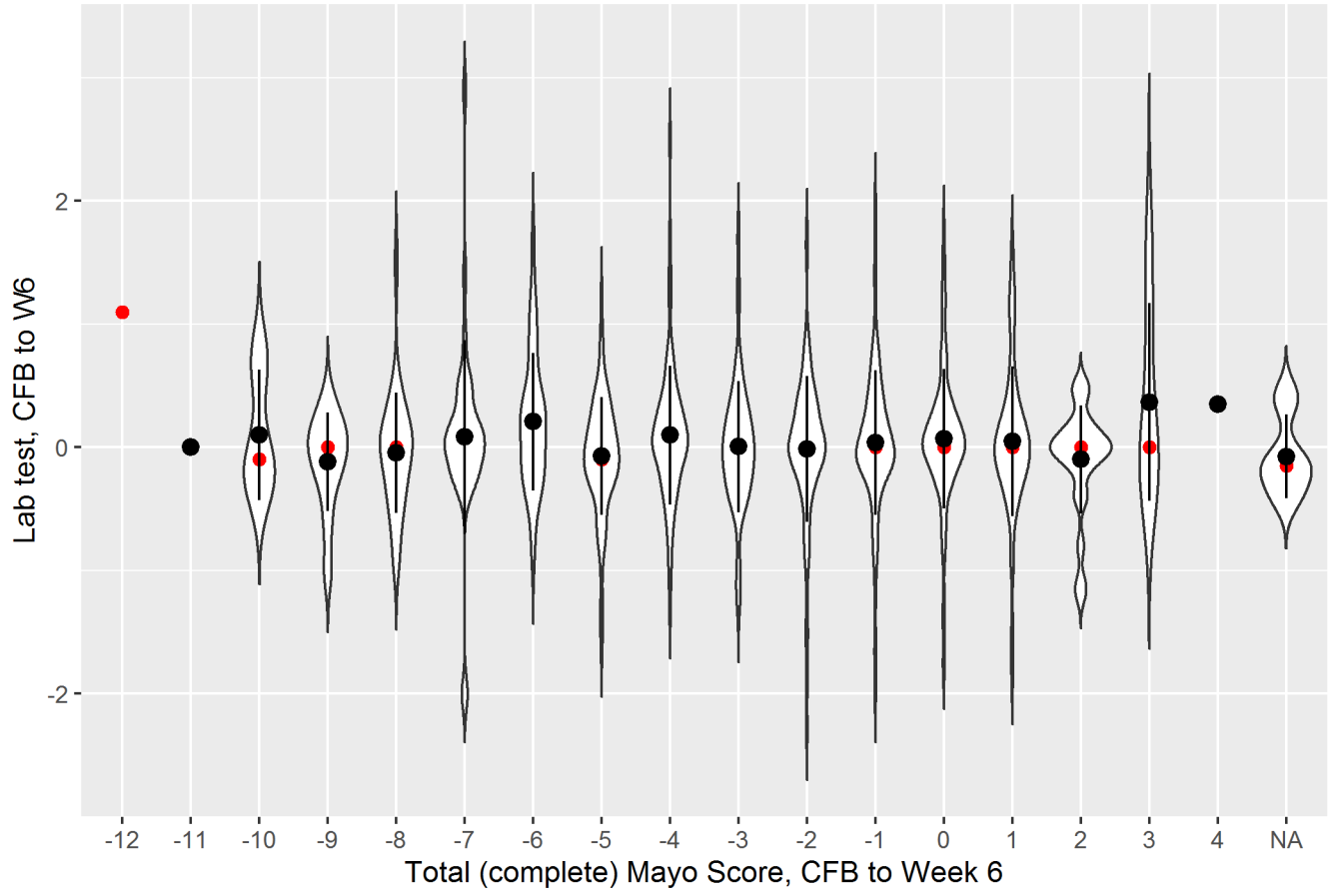


Violin Plot for Protein, g/L
: change from baseline lab vs outcome

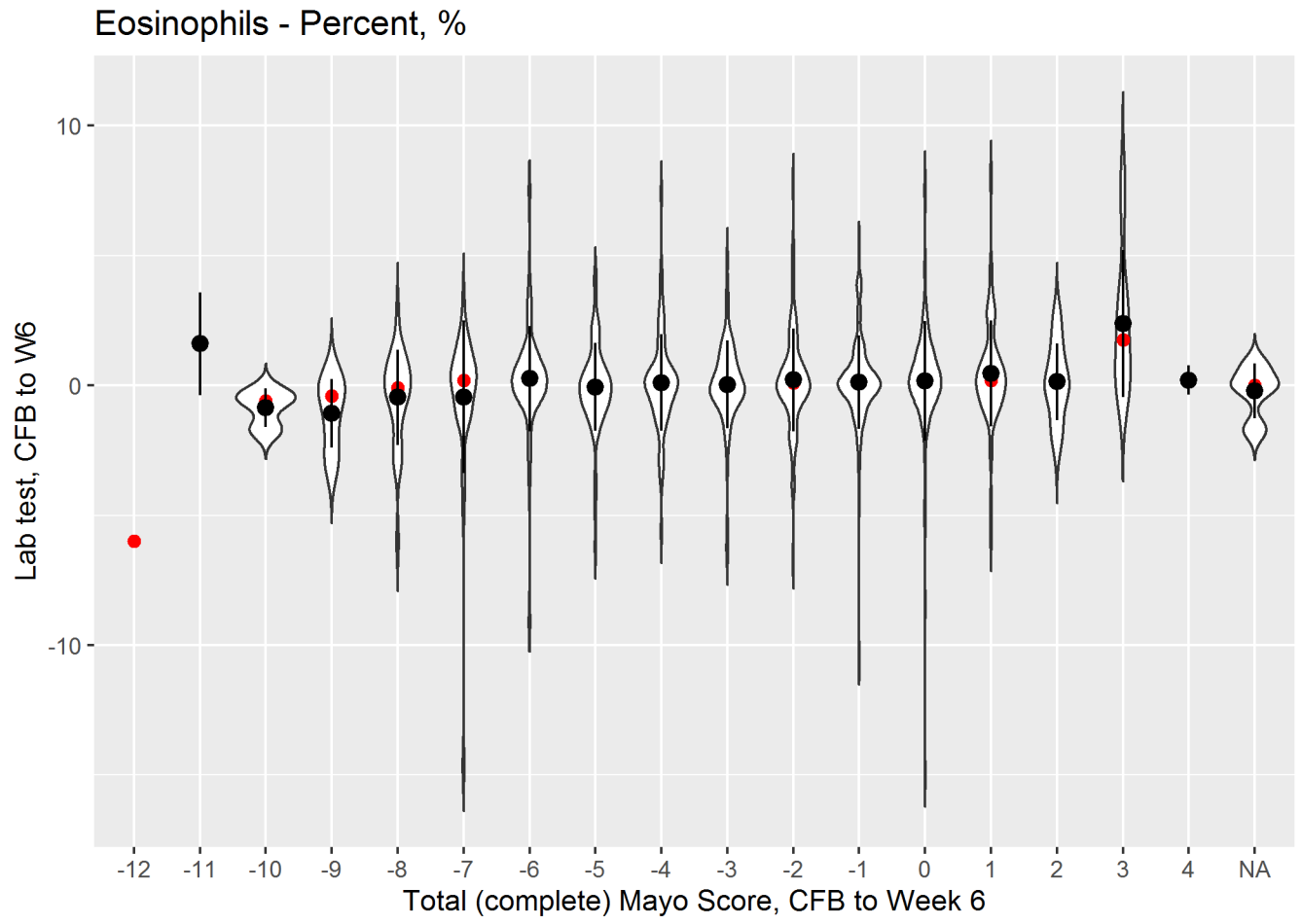


Violin Plot for Basophils - Percent, %
: change from baseline lab vs outcome

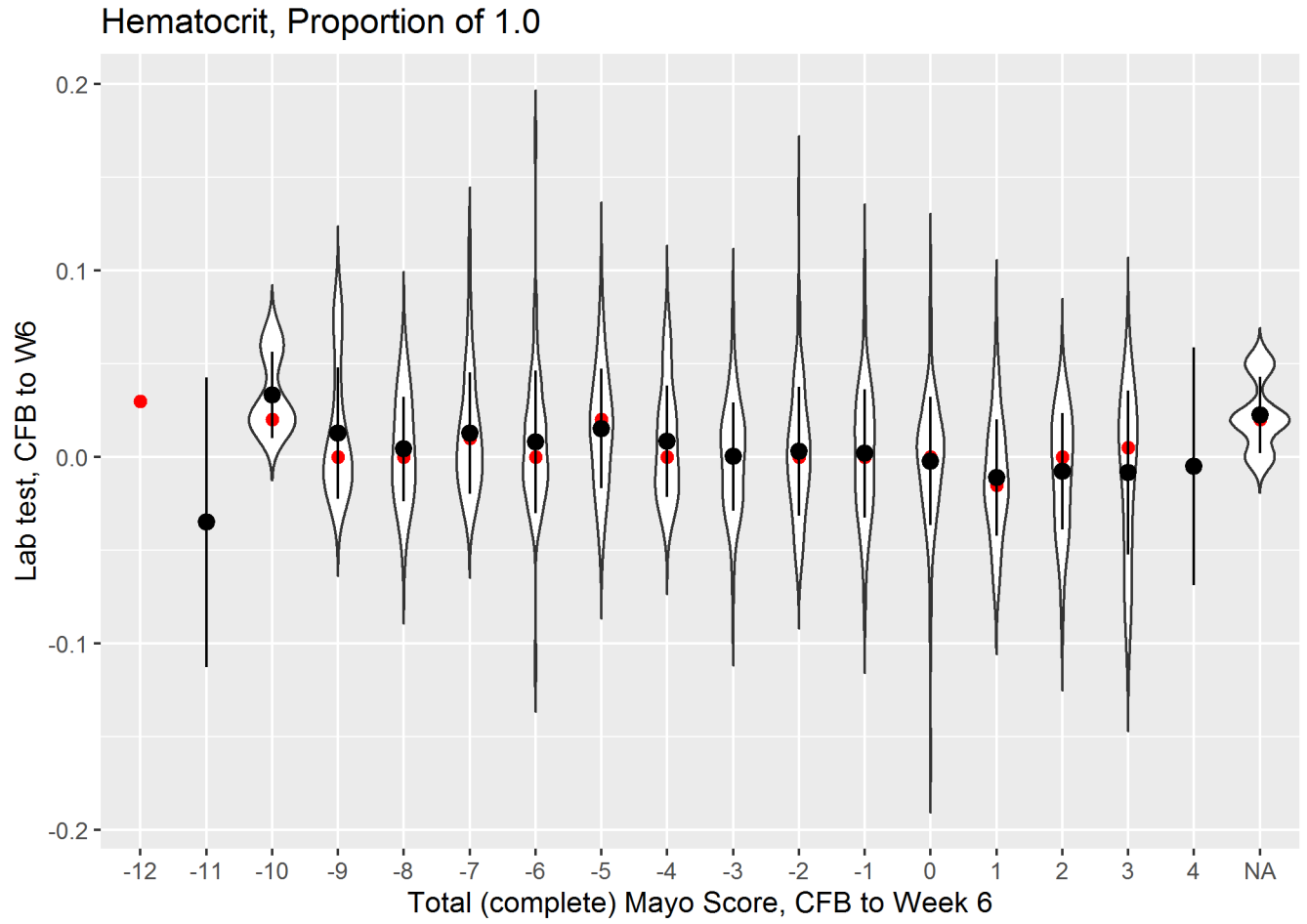
Basophils - Percent, %



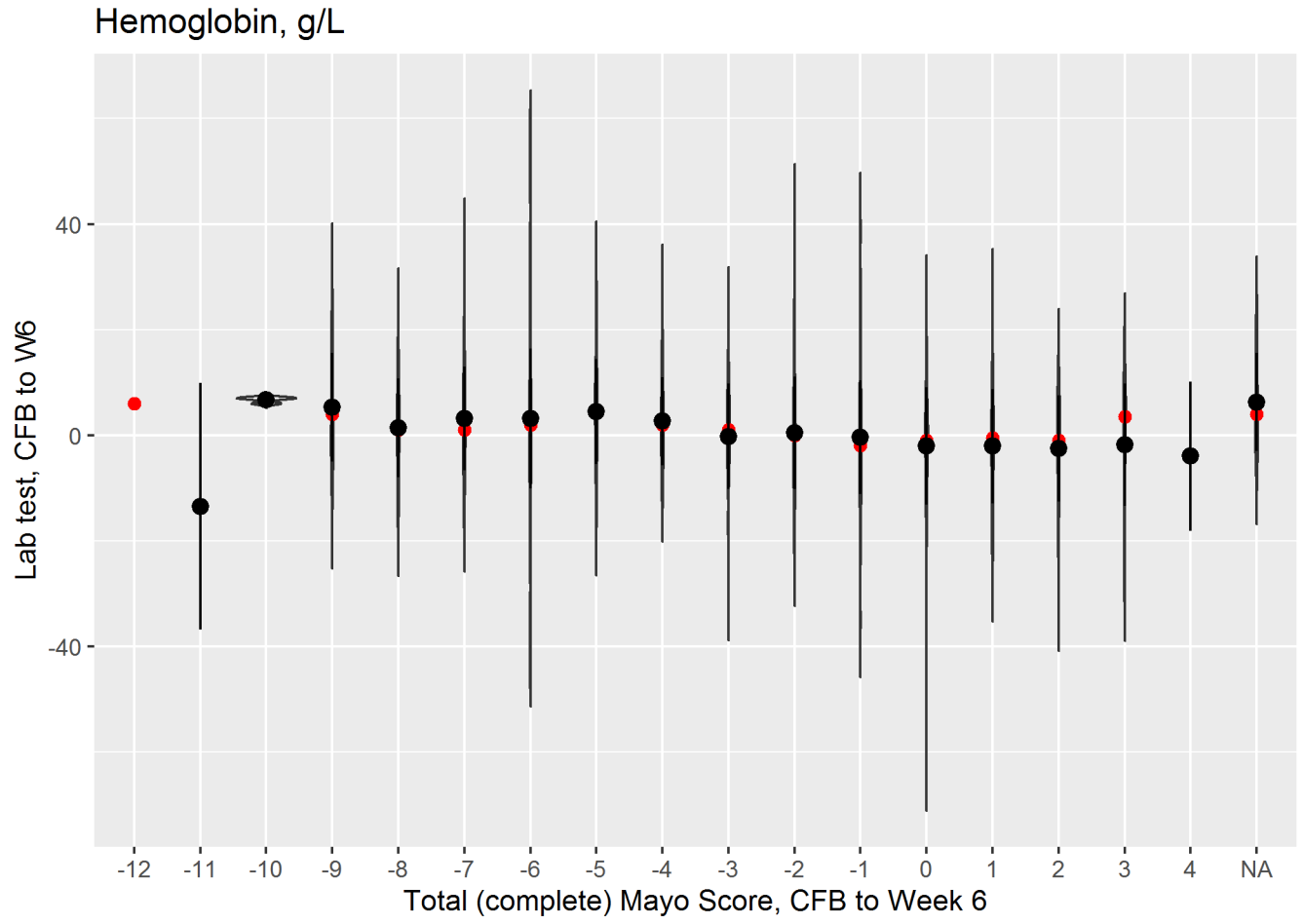
Violin Plot for Eosinophils - Percent, %
: change from baseline lab vs outcome



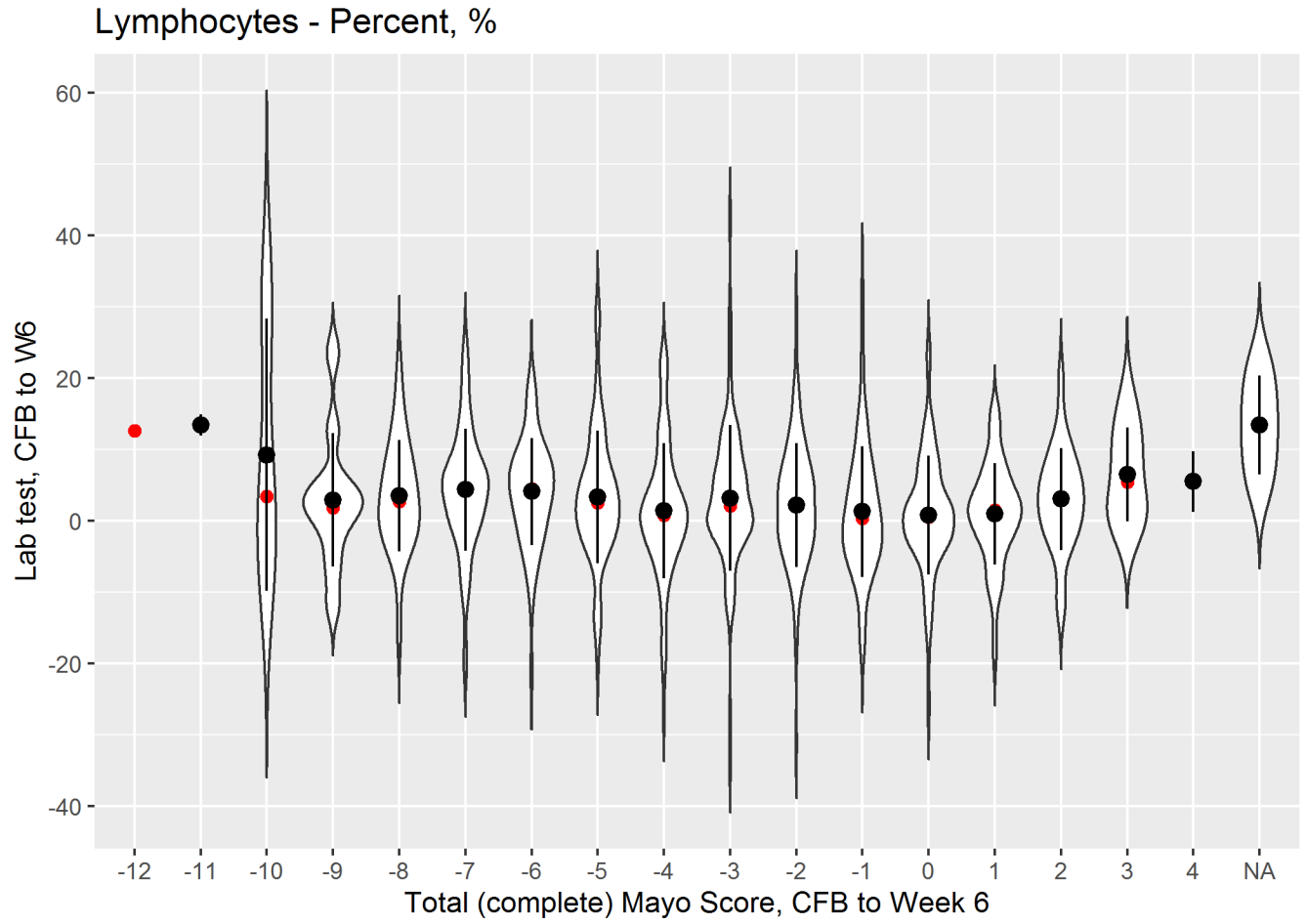
Violin Plot for Hematocrit, Proportion of 1.0
: change from baseline lab vs outcome



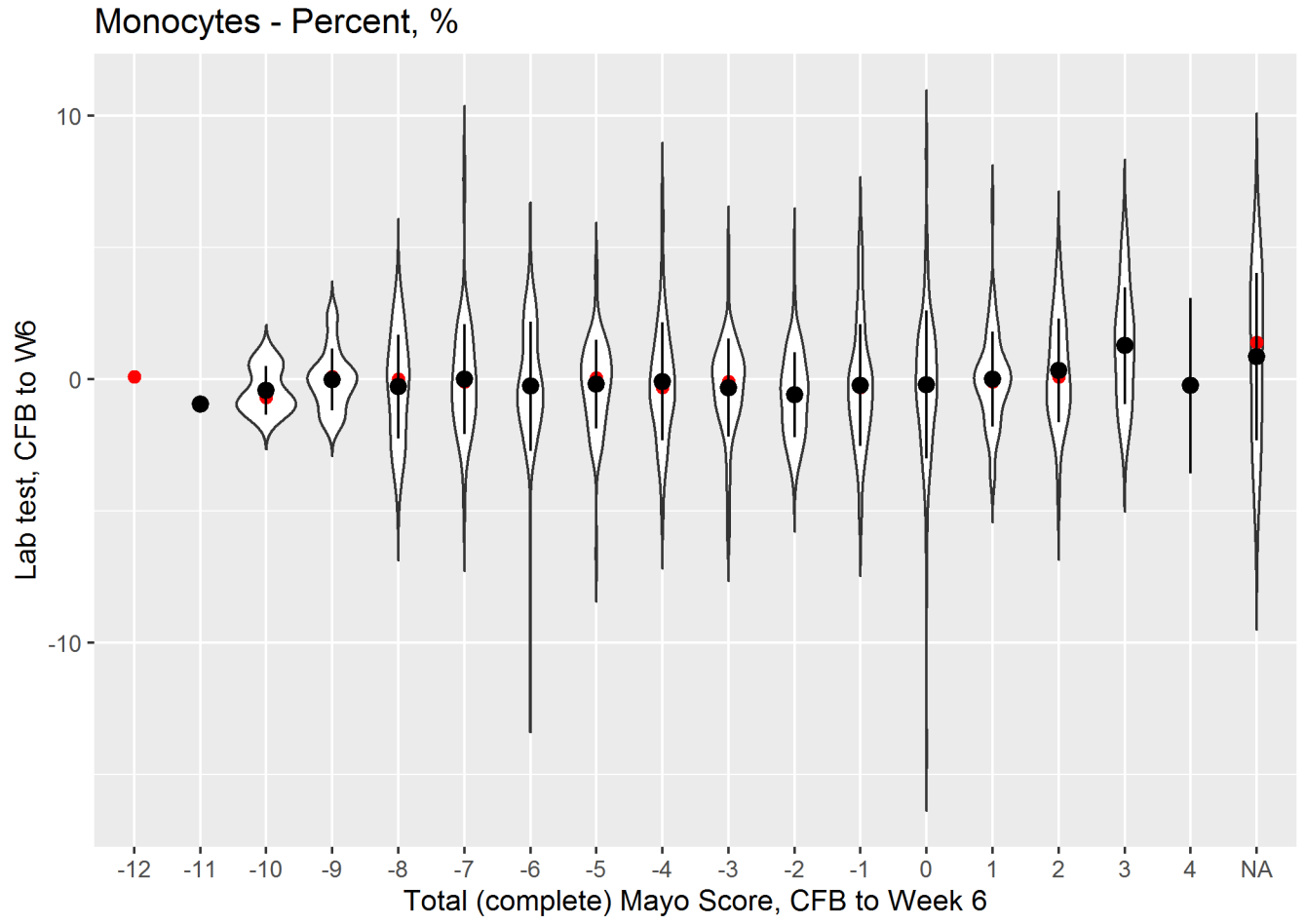
Violin Plot for Hemoglobin, g/L
: change from baseline lab vs outcome



Violin Plot for Lymphocytes - Percent, %
: change from baseline lab vs outcome

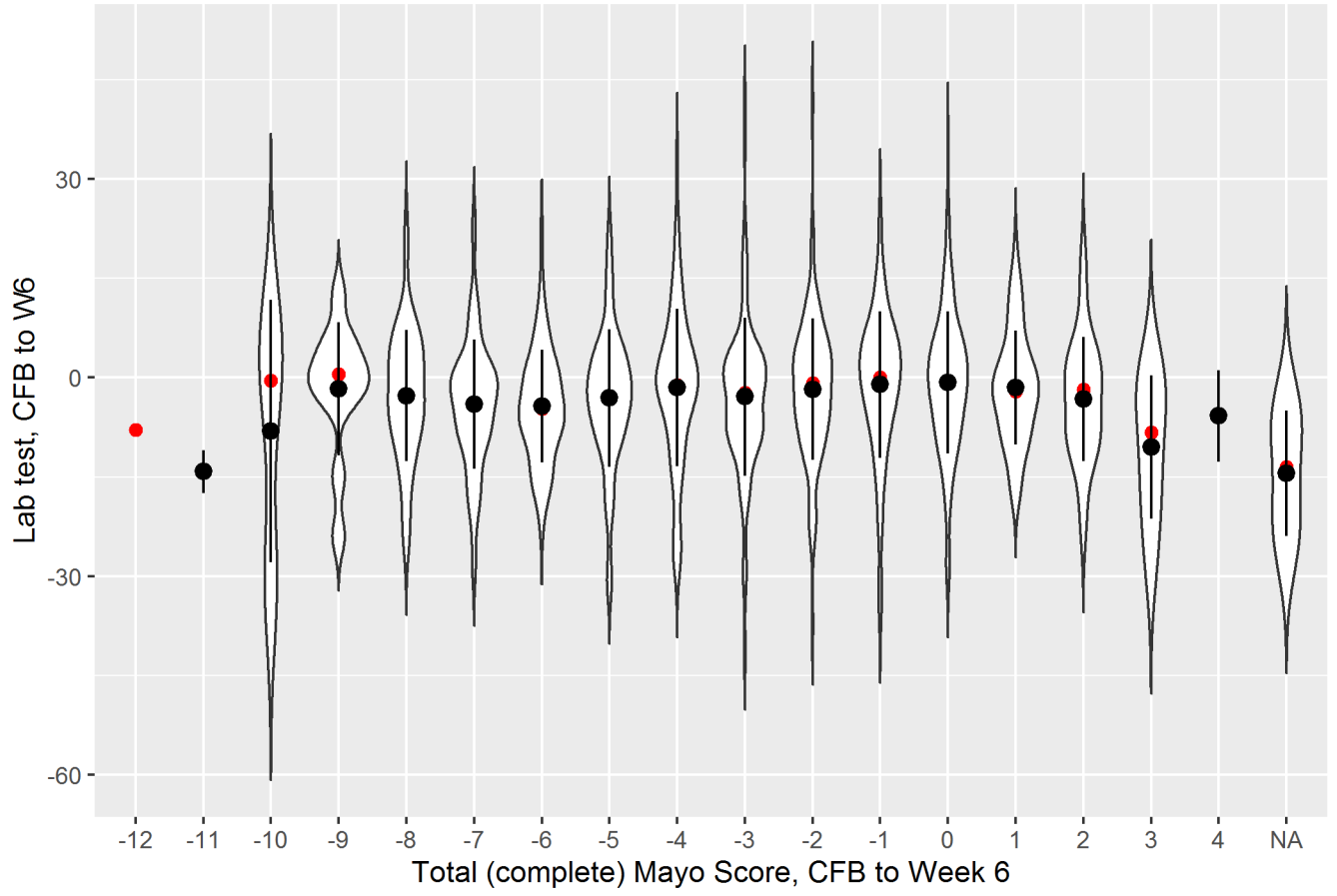


Violin Plot for Monocytes - Percent, %
: change from baseline lab vs outcome

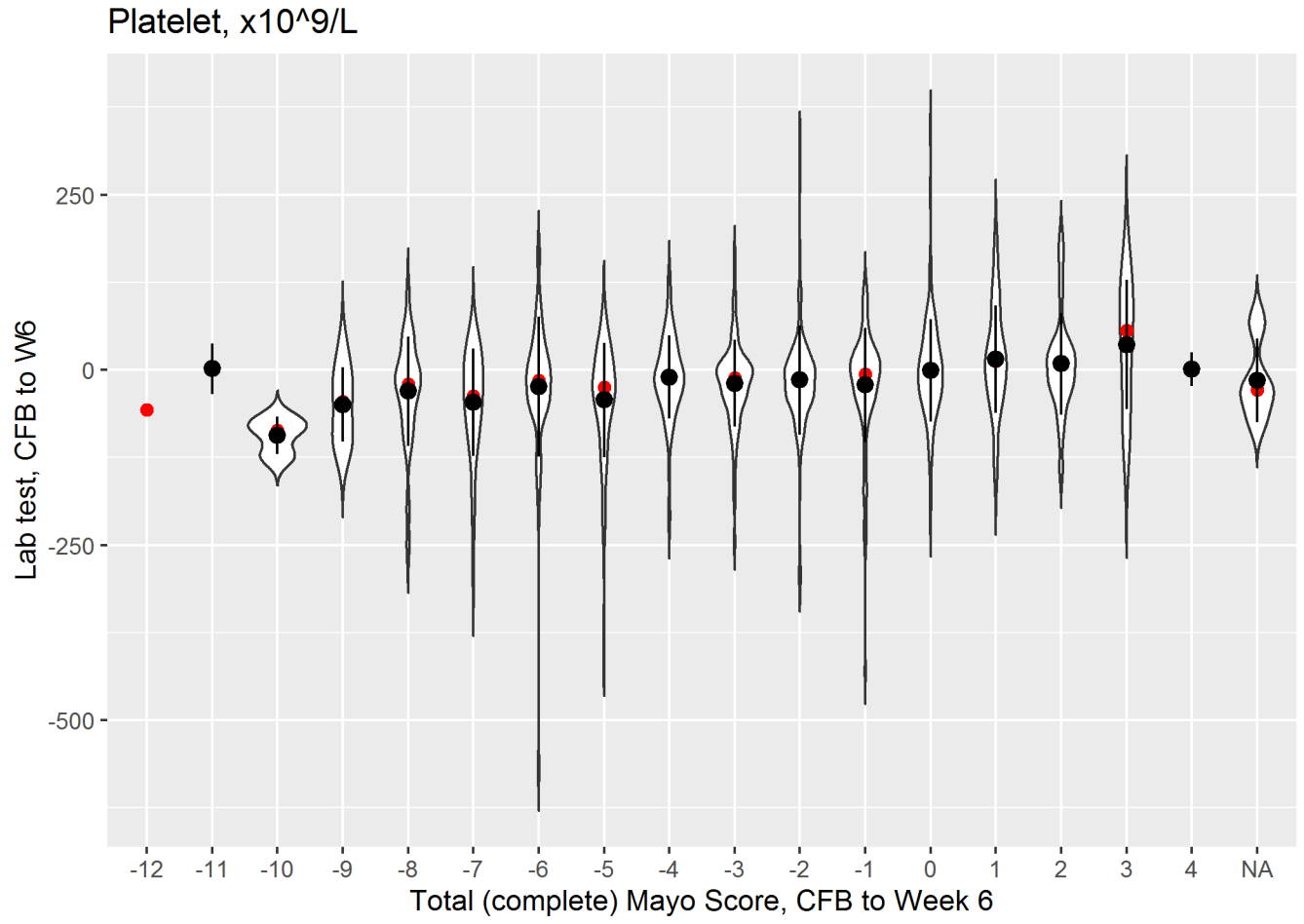


Violin Plot for Neutrophils - Percent, %
: change from baseline lab vs outcome

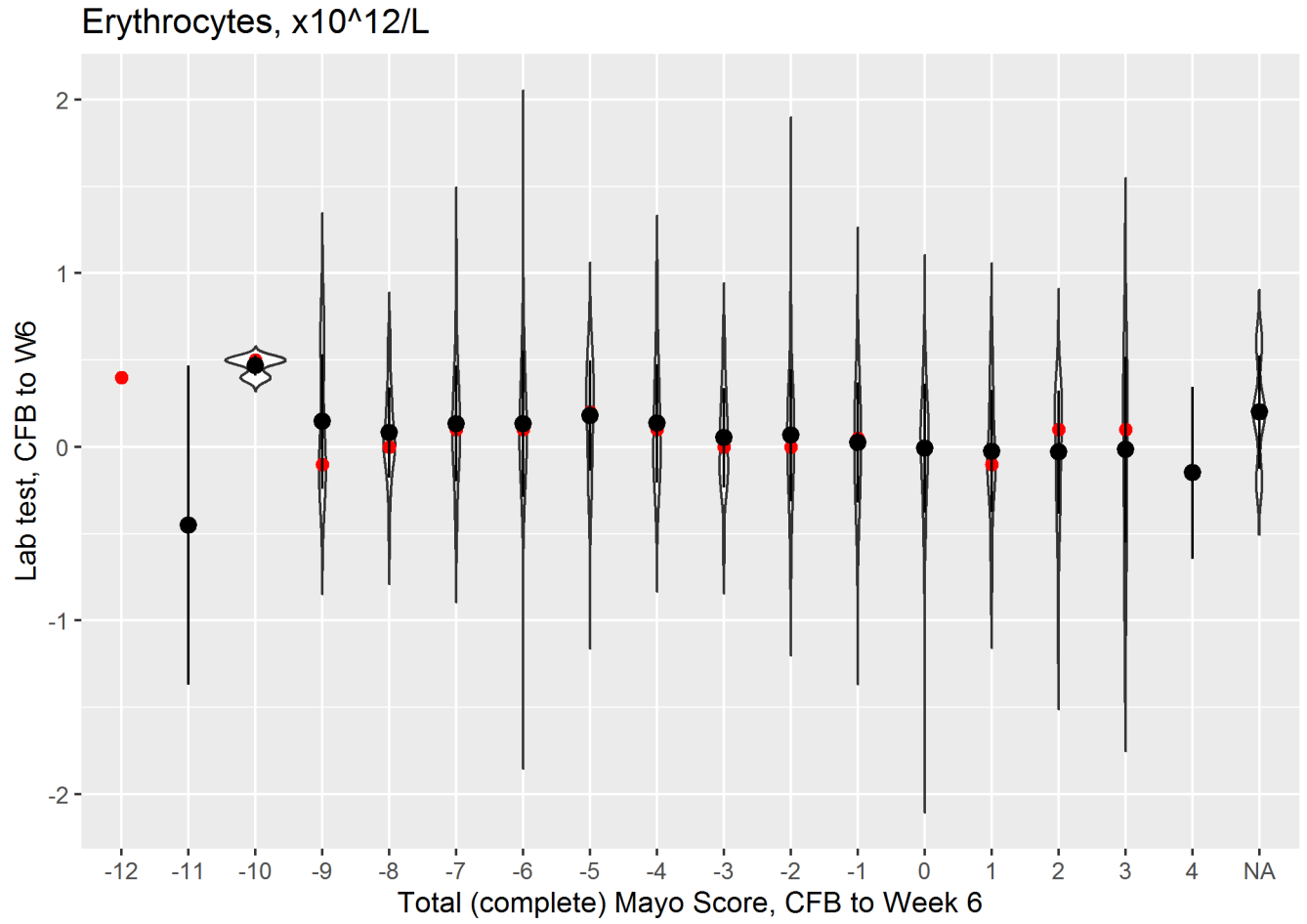
Neutrophils - Percent, %



Violin Plot for Platelet, $\times 10^9/L$
: change from baseline lab vs outcome

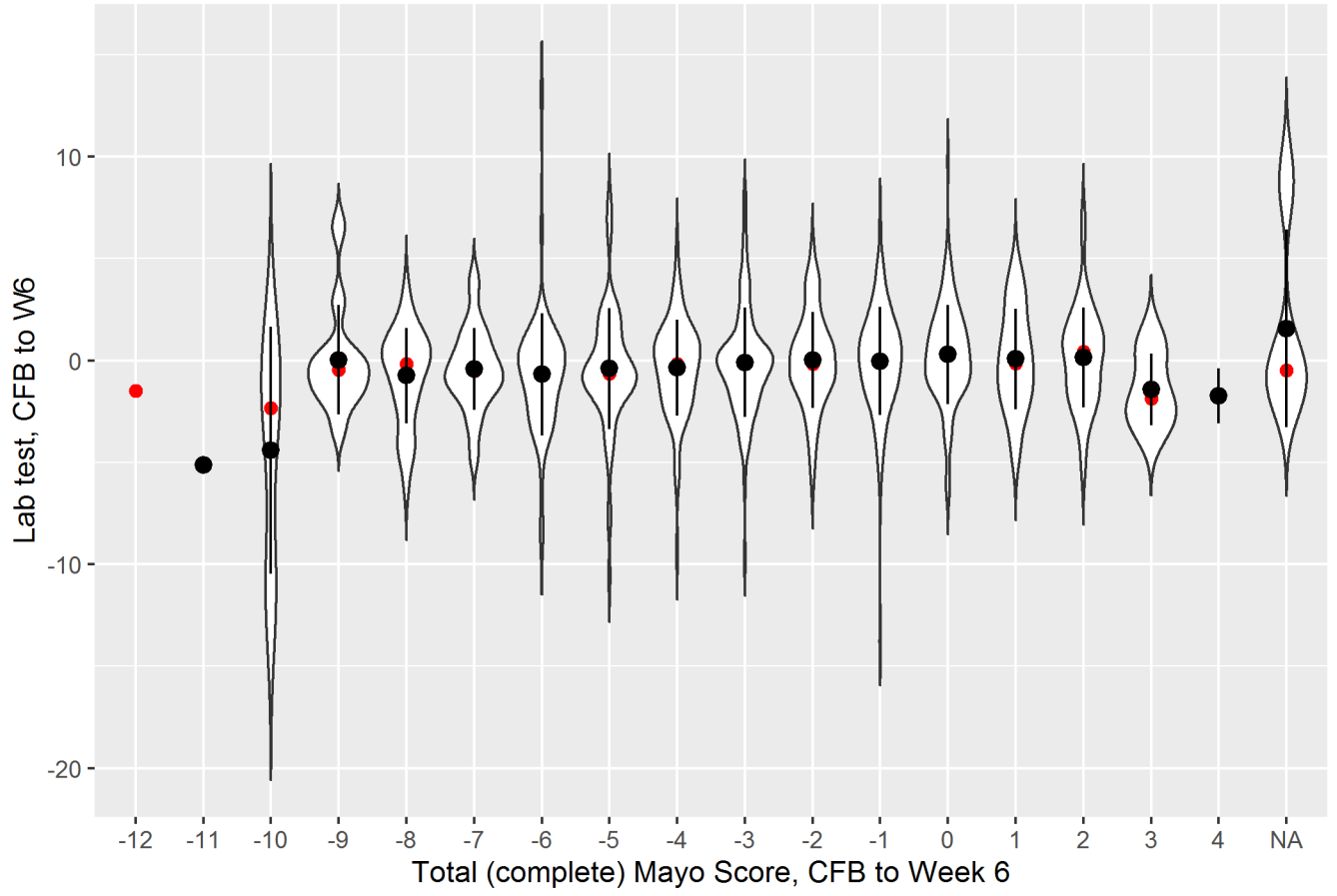


Violin Plot for Erythrocytes, x10¹²/L
: change from baseline lab vs outcome



Violin Plot for Leukocytes, $\times 10^9/L$
: change from baseline lab vs outcome

Leukocytes, $\times 10^9/L$



Violin Plot for Fecal Calprotectin, mg/kg
: change from baseline lab vs outcome

